



7000 series

QUALITY PAPER PUNCHING & BOOK BINDING EQUIPMENT



The Rhin-O-Tuff 7000 heavy duty punch is made to last!
Add different modules and accessories to complete your bindery needs.



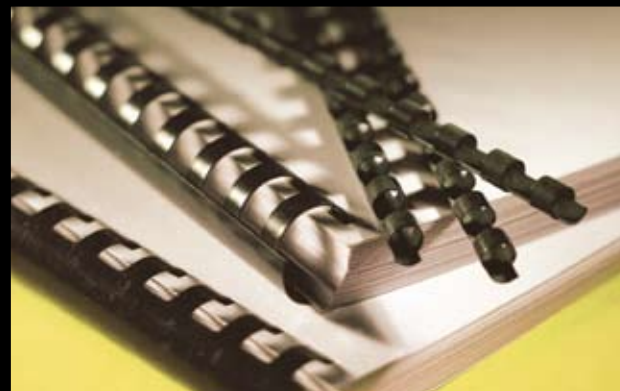
Coil

Systems & Modules
pg. 2-3



Wire

Systems & Modules
pg. 4-5



Comb

Systems & Modules
pg. 6

Paper Lifters pg. 7
Semi-Auto Punches pg. 8
Miscellaneous pg. 9



All equipment is warranted for one
(1) year to be free of defects in
material and workmanship.

PUNCHES



7000 14" Heavy-Duty Electric Open-Ended Punch



FEATURES

14" Electric Open-Ended Table Top Punch
Operator Options: Foot Pedal, Palm Switch, and Versa Switch
Easy Pin Removal



SHEET CAPACITY
up to 30 sheets
(20 lb paper)

DIES

Patented "Quick Change Die"
Dies available for Coil, Wire, and Comb
Comes with your choice of one Standard Die



COIL SYSTEMS



7000-CK 14" Heavy-Duty Open-Ended Table Top Punch, Coil Inserter & Crimper



FEATURES

- 14" Open-Ended Table Top Punch
- Operator options : Foot Pedal, Palm Switch, and Versa Switch
- Easy Pin Removal
- Heavy-Duty, Dual-Powered Adjustable Rollers
- Durable Crimper for Coil Finishing

DIES

- Patented "Quick Change Die"
- Dies available for Coil, Wire, and Comb
- Comes with your choice of one Standard Die



**SHEET
CAPACITY**
up to 30 sheets
(20 lb paper)



COIL MODULES



Coil Binding Modules



4170-K Coil Inserter & Crimper

Heavy-Duty Dual-Powered adjustable rollers
Durable Crimper for coil finishing



4170 Coil Inserter

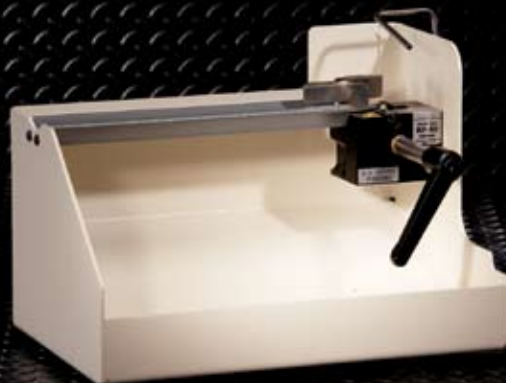
Heavy-Duty Dual-Powered adjustable rollers
Stand alone
Attaches to all Vertical Punches as a module

Coil Binding Accessories



4101 Book Former

Shapes spine of book for easy coil insertion



KF-50KB Stand Alone Crimper

Durable Crimper for Coil Finishing



WIRE SYSTEMS



7083 14" Open-Ended Table Top Punch, Wire Inserter & Wire Closer **7000W**

Inserts Twin Loop Wire
Closes to finish wire application
Adjustable 3-1 Pitch "1/4 to 9/16"



Open-Ended Flat Bar Closer
Closes Twin Loop Wire in one pull of the handle



FEATURES

14" Open-Ended Table Top Punch
Operator options : Foot Pedal, Palm Switch, and Versa Switch
Easy Pin Removal

DIES

Patented "Quick Change Die"
Dies available for Coil, Wire, and Comb
Comes with your choice of one Standard Die



SHEET CAPACITY
up to 30 sheets
(20 lb paper)



WIRE MODULES



Wire Binding Modules



8000 Wire Closer

- Open-Ended Flat Bar Closer
- Manually closes Twin Loop Wire
- Stands alone
- Attaches to all Vertical Punches as a module



EWC-83 Electric Wire Closer

- Semi-Automatic Wire Closer
- Inserts and closes wire
- Adjustable sizes of 3-1 pitch $1/4$ to $9/16$ "
- Stand alone only



8370 Manual Wire Closer

- Semi-Automatic Wire Closer
- Inserts wire
- Closes Twin Loop Wire with one pull of handle
- Adjustable sizes of 3-1 pitch $1/4$ to $9/16$ "



COMB SYSTEMS



7000-44 14" Open-Ended Table Top Punch & Comb Opener



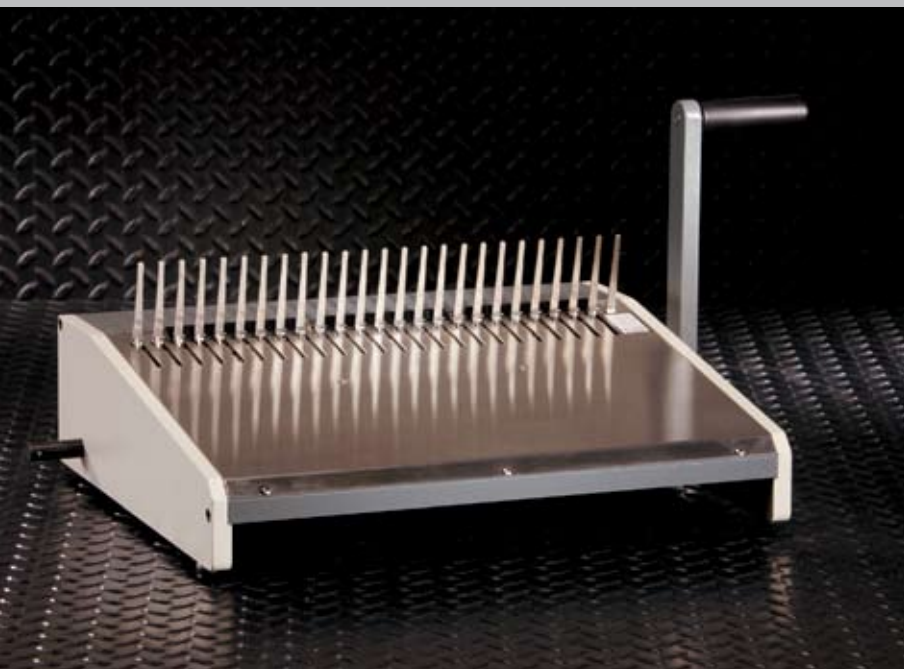
FEATURES

- 14" Open-Ended Table Top Punch
- Easy Pin Removal
- Spreads Combs for books up to 2"

DIES

- Patented "Quick Change Die"
- Dies available for Coil, Wire, and Comb
- Comes with your choice of one Standard Die

SHEET
CAPACITY
up to 30 sheets
(20 lb paper)



4470 COMB OPENER

- Manual Comb Spreader
- Spreads combs for books up to 2" thick
- Stands alone
- Can be mounted on all Vertical Punches



PAPER LIFTERS



Lifts average number of sheets each time

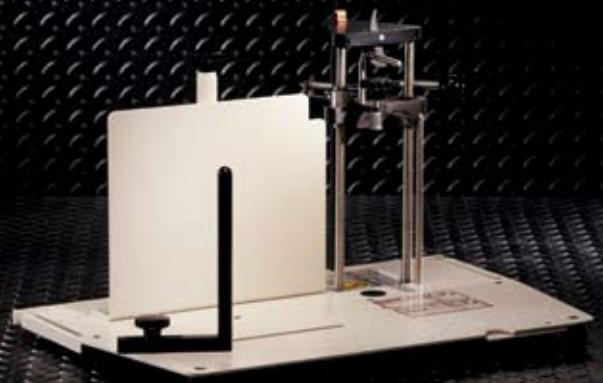


7000P Punch & Electric Paper Lifter

14" Open-Ended Table Top Punch
Patented "Quick Change Die"
Sheet capacity up to 30 sheets (20lb paper)
Dies available for Coil, Wire, and Comb
Easy Pin Removal
Automatically lifts average # of sheets each time
Comes with choice of one Standard Die

7000PM Punch & Manual Paper Lifter

14" Open-Ended Table Top Punch
Patented "Quick Change Die"
Sheet capacity up to 30 sheets (20lb paper)
Dies available for Coil, Wire, and comb
Easy Pin Removal
Manually lifts average # of sheets each time
Comes with choice of one Standard Die



PAL-14 Electric Paper Lifter

Automatically lifts average # of sheets each time
Sits atop any Vertical Punches

PAL-M Manual Paper Lifter

Manually lifts average # of sheets each time
Sits atop any Vertical Punch



SEMI-AUTO SYSTEMS

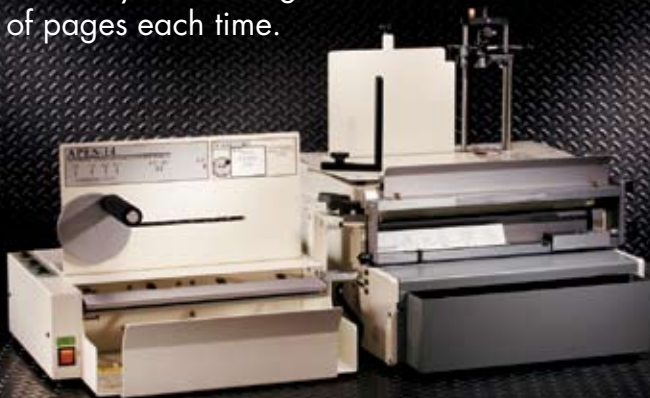


Lift, Punch, and Stack Paper for added Efficiency

Automatically lifts average number of pages each time.



Manually lifts average number of pages each time.



Punch and Stack Paper for added Efficiency

Ejects and stacks the paper automatically after it is punched



7000PA

- 14" Open-Ended Table Top Punch
- Automatically lifts same # of sheets each time
- Versa Switch punches and ejects paper in one motion
- Stacks paper automatically after punched
- Sheet capacity up to 30 sheets (20 lb paper)
- Dies available for Coil, Wire, & Comb
- Comes with choice of one Standard Die
- Patented "Quick Change Die"
- Easy pin removal

7000PMA

- 14" Open-Ended Table Top Punch
- Manually lifts same # of sheets each time
- Versa Switch punches and ejects paper in one motion
- Stacks paper automatically after punched
- Sheet capacity up to 30 sheets (20 lb paper)
- Dies available for Coil, Wire, & Comb
- Comes with choice of one Standard Die
- Patented "Quick Change Die"
- Easy pin removal

7000A

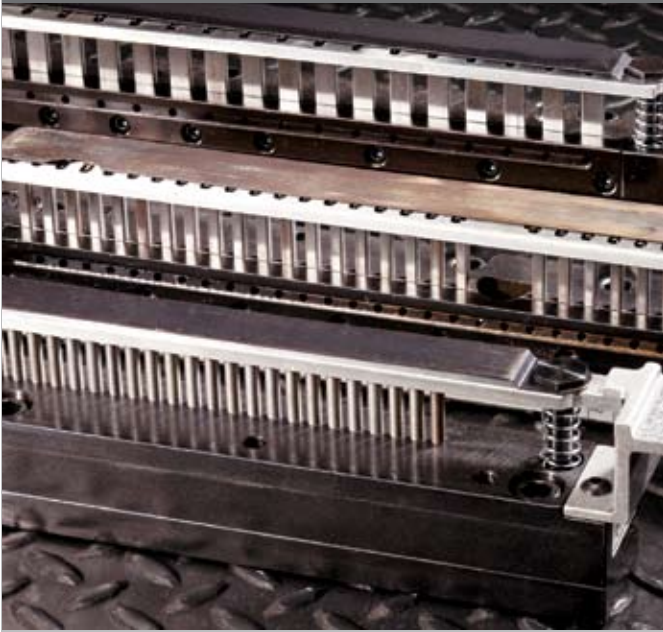
- 14" Open-Ended Table Top Punch
- Stacks paper automatically after punched
- Sheet capacity up to 30 sheets (20 lb paper)
- Dies available for Coil, Wire, & Comb
- Comes with choice of one Standard Die
- Patented "Quick Change Die"
- Easy pin removal



MISCELLANEOUS



Dies & Die Racks



Plastic Comb Binding



Wire Binding
3:1 Pitch, Double Loop, Square Hole



Plastic Coil; 4:1 Pitch, Round Hole



Wire Binding
3:1 Pitch, Double Loop, Round Hole



Plastic Coil; 5:1 Pitch, Round Hole



Wire Binding
2:1 Pitch, Double Loop, Round Hole



Plastic Coil
4:1 Pitch, 248 Hole Spacing, Round Hole



VeloBind®



Wire Binding
2:1 Pitch, Double Loop, Square Hole



3-Hole



More Dies Available

DIE RACKS



RTT-42

Adjustable Heavy-Duty Work Table
Adjusts from 25" to 44" high (63cm-112cm)
42" (107cm) wide with 200 lbs. capacity



STRONG • **SIMPLE** • **HONEST** • **CAPABLE**
TUFF AND BUILT TO LAST EASY TO USE & MAINTAIN TRUSTWORTHY & SOLID NEVER LETS YOU DOWN

